

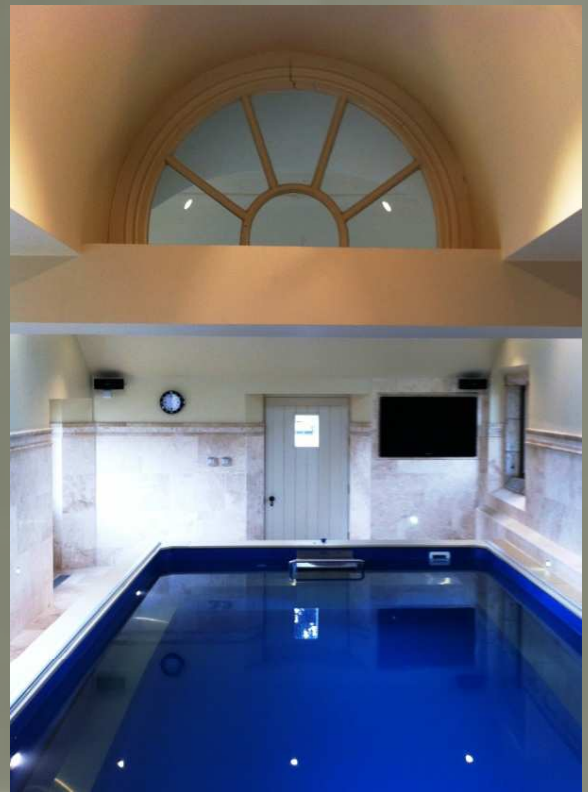
East Newton Nunnington North Yorkshire

Conversion and Alteration to form a
Pool House Leisure Facility

Project Period 16 weeks

Project Value £130,000

Architects: Francis Johnson & Partners



Scothern Construction Ltd

3 York Road Industrial Park, Rye Close, Malton, North Yorkshire, YO17 6YD

Tel: 01653 698 382 web: www.scothernconst.co.uk